

# FASTFREDDY

BY SPLIT-FIRE



*Thank You for Purchasing a Fast Freddy Winder!*

*We appreciate having you as our customer and wish you many years of safe and satisfactory operation with your machine.*

## **SPLIT-FIRE SALES INC.**

285633 Airport Road  
Norwich, ON N0J 1P0  
Canada

**1-877-548-3473 / 519-468-3647**



Please share a google review about your  
Split-Fire experience

# Contents

1.	Introduction .....	4
1.1	How to use your Owner’s Manual.....	4
1.2	Product Identification.....	6
2.	Safety .....	8
2.1	Safety Labels.....	8
2.2	Operator Training.....	9
2.3	Operation & Work Site Safety .....	10
3.	Operation .....	12
4.	Assembly.....	18
4.1	Assembly – Fast Freddy 4 & 6 .....	18
5.	Storage .....	24
5.1	Storage Warnings .....	24
5.2	Storage Accessories.....	24
6.	Warranty.....	25
7.	Parts Breakdowns .....	28
7.1	Fast Freddy 4 Parts Breakdown.....	28
7.2	Fast Freddy 6 Parts Breakdown.....	30

## **1. Introduction**

### **1.1 How to use your Owner's Manual**

By reading the operator's manual you will help avoid unnecessary personal injury and/or damage to the winder. The information recorded in this manual will help you use this winder safely and effectively. Once you know how to operate the winder correctly and safely, you can train others to operate the winder as well.

The Fast Freddy Winder that is used in this manual for illustration may differ slightly from your model. It will be similar enough to help you understand our instructions.

Throughout this manual the terms "Back" and "Front" will be used. The "Front" of the winder is where the crank handle is located on the side that contains the wound, hose, cable or rope. The "Back" is the side that houses the bearings. Also, the terms "Left Hand" and "Right Hand" will be used. These sides are determined when standing in front of the winder.

Your machine has been tested and inspected to ensure good performance prior to leaving the factory.

Please carefully read and understand the warnings about safety concerns relating to machine damage and important servicing information. Please read all these messages to avoid personal injury and machine damage. The three main messages will start with:

**WARNING!!!** which suggests, a strong chance of personal injury to the operator or bystanders if procedures are ignored.

**IMPORTANT:** which suggests, a strong chance of potential damage to the machine may occur if procedures are ignored.

**NOTE:** suggests to the operator, general information given to help the operator to operate or service the machine.

Introduction

## 1.2 Product Identification

If you ever need to contact your dealer or the manufacturer for parts or questions regarding the operation or servicing of the machine, it is important to have the model number as well as all the necessary identification numbers. Using the sample picture below you can find the necessary number to complete the spaces below.

Date of Purchase: \_\_\_\_\_

Dealer Name: \_\_\_\_\_

Dealer Phone Number: \_\_\_\_\_

Frame Serial Number: ( XX XX XX ) \_\_\_\_\_

### Frame Serial Number



The Fast Freddy Winder is manufactured by Split-Fire Sales Inc., an Original Equipment Manufacturer (OEM) based in Canada.

Split-Fire products have been designed and engineered to be safe, productive, long lasting machines using design principals not found in other comparable products. A combination of smart engineering and quality manufacturing by highly skilled technicians results in a quality, made-in-Canada product.



**SPLIT-FIRE™ is a registered Trademark of  
Split-Fire Sales Inc.**



## Safety

## 2. Safety

### 2.1 Safety Labels

The product safety labels shown in the section below are very important. They are placed in areas on the winder that draw the attention of the operator to potential safety hazards associated with the winder. If at any time the stickers are removed, or come off, contact your dealer or the manufacturer immediately for replacement decals.

Special attention should be given to these recommendations. They are outlined for your safety.

### Safety Stickers





## 2.2 Operator Training

### **WARNING!!!**

- ✓ Carefully read and understand all the instructions in the operator's manual before operating or servicing your hose winder. If any doubt or question arises about the safe and/or correct method of performing anything in this manual, contact your local dealer or the manufacturer.
- ✓ Avoid accidents by being alert and recognizing potential hazards. Not all possible circumstances can be anticipated in this manual. Keep your winder and work area safe for yourself and others. Proper care and safety are your responsibility.
- ✓ Only adults over the age of 18 should operate this manual hose winder.
- ✓ The Fast Freddy Winder is designed and intended for use by one operator only.
- ✓ All operators must have the necessary training and skills to operate the winder properly and safely. Read and understand the owner's manual and follow the safety warnings and recommendations. Never allow untrained persons to operate or service the equipment.
- ✓ The owner is responsible for accidents and injuries to themselves and/or other persons operating their winder. If others are permitted to use this winder it is the responsibility of the owner to train users.

## 2.3 Operation & Work Site Safety

- ✓ Inspect your machine each time before use. Special attention should be taken that all damaged or missing parts are replaced, and that all the safety decals highlighted in the safety labels section are in place, clear and visible on the machine.
- ✓ Only allow responsible adults, over the age of 18, who have read and fully understand the full instructions to operate the machine. Only one person may operate the machine at any time.
- ✓ Only use the crank handle to turn the winder wheel.
- ✓ Each time you operate your winder, ensure that the crank handle and the winder wheel turns freely.
- ✓ Keep hands and body parts clear of the wheel when spinning and keep hands away from pinch points (between the adjustable guide arm and frame) when adjusting the guide arm.
- ✓ Your machine is designed to reel in and wind up hoses, cables and ropes. Any other material may cause damage to the machine and increase the chance of personal injury.
- ✓ Keep the working area and ground around the winder organized, lit and free of equipment, tools, unwound hose, cable, rope and debris. Not doing so could result in injury.
- ✓ Before operating the winder make sure to disengage the safety wheel lock and that the winder is firmly sitting on level ground. Operate the winder on level surface only.

- ✓ Always slow down crank speed when nearing the unwound end of the hose, cable or rope to prevent whiplashing action.
- ✓ Take frequent breaks and be alert when using the winder.
- ✗ Do not operate your winder in enclosed areas or around other pieces of moving machinery. You will need ample room to work with your unwound hose, cable or rope.
- ✗ Never attempt to stop the winder wheel by hand or force. Always use crank handle provided or wait for momentum of the wheel to slow down and stop if crank handle control is lost.
- ✗ Never wear loose clothing and keep long hair tied back when operating the winder either can get caught and cause injury.
- ✗ Never operate the winder if anybody is standing nearby. Nobody other than the operator should be within 25 feet of the winder. Keep other distractions like electronic devices away.
- ✗ Never operate winder if under alcohol or drug influence.
- ✗ Do not over-spin the winder to increase the speed beyond the operator's comfort level.
- ✗ Do not alter; add accessories, or attachments to your winder without the approval of the manufacturer. If manufacturer approved attachments have been added, be sure to keep safety labels visible.

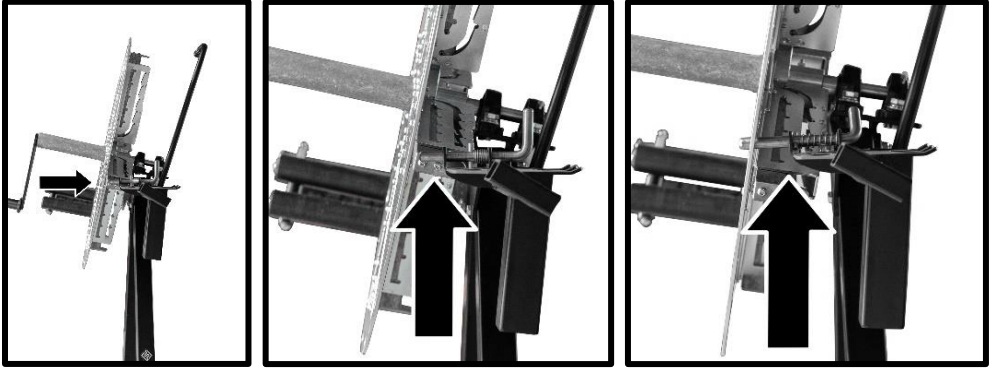
Doing any of the above without the manufacturer's approval  
**WILL VOID THE WARRANTY.**

Operating

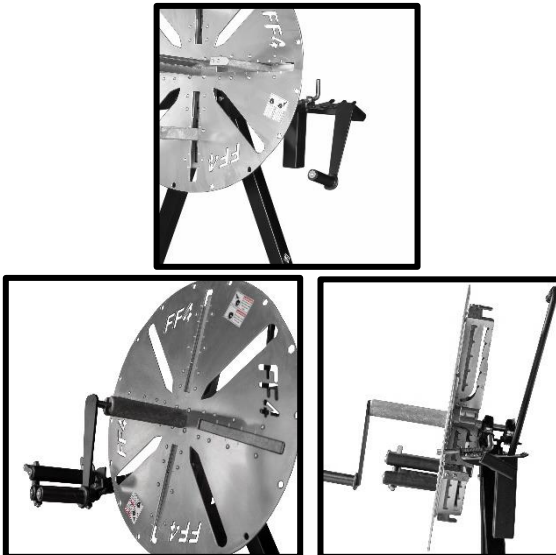
### 3. Operation

Make sure that you have read and understand all safety recommendations before operating the winder.

1. Disengage the wheel lock on the right side of the machine.



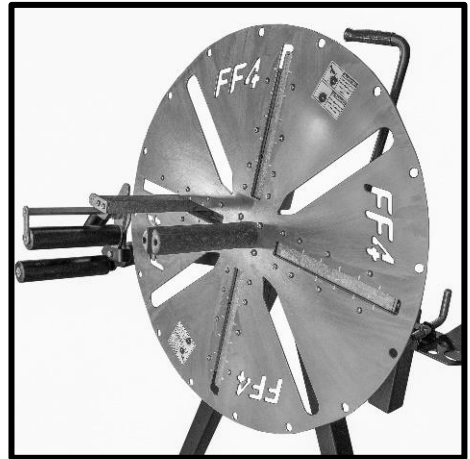
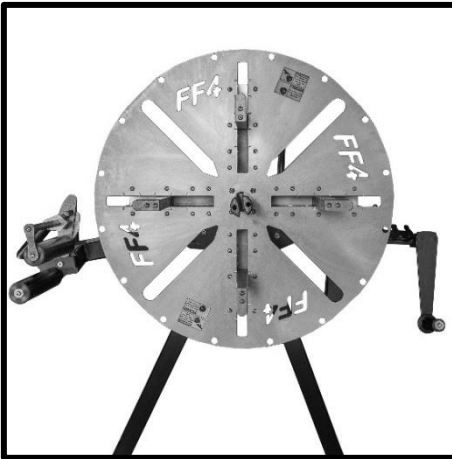
2. Remove the crank handle from its holder and insert it into the reel plate stem for turning the wheel.



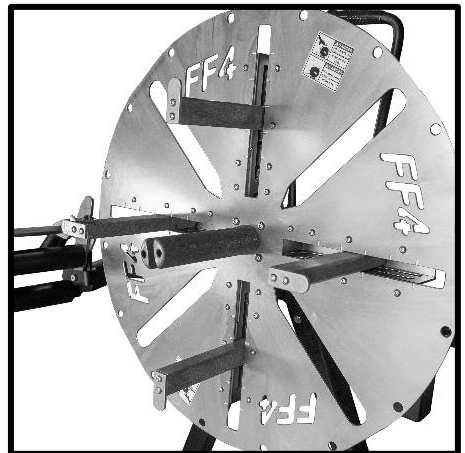
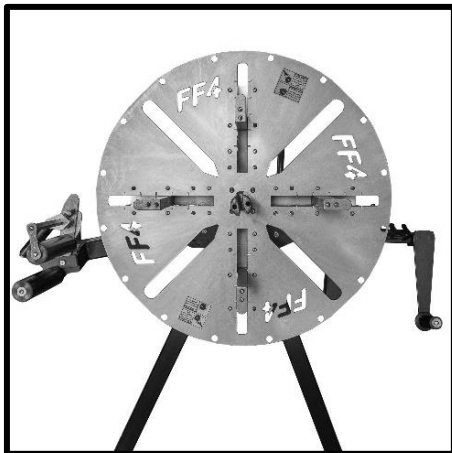
- Determine the size of the inner diameter opening you desire and engage one or more of the detent arms to the desired height. Ensure that each detent arm is fully engaged in its slot. Using one detent arm in the lowest position will give you the smallest opening. Using all four detent arms in the highest position will give you the largest opening.

For some applications the detent arms do not need to be used.

One Detent Arm



Four Detent Arms



Operating

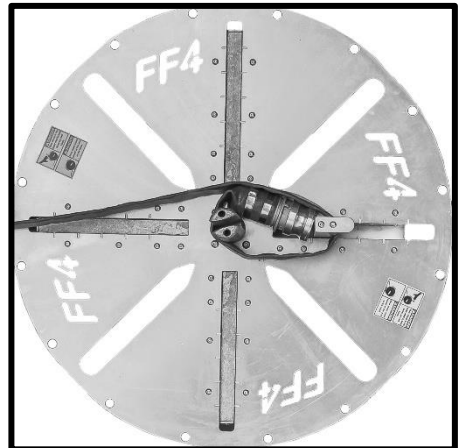
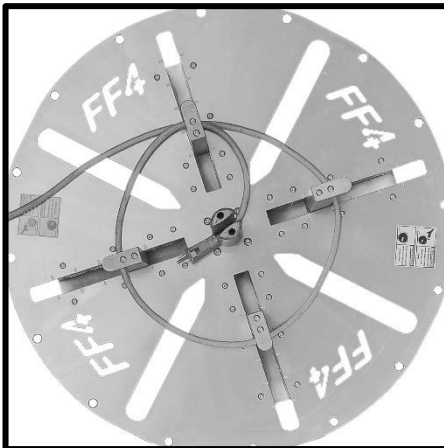
When winding small diameter cables use the detent shoulders provided with the winder to prevent the cable from sliding off the detent arm.



Take the lead end of the hose, cable or rope that is to be wound and secure it through the reel plate stem.

If the diameter of the hose or cable exceeds  $\frac{1}{2}$ " place it over the stem.

Insert the crank handle into the reel plate stem.



Secure the hose, cable or rope through the Fair Lead, threading it flush through the Vertical Rollers and then down through the Horizontal Rollers.

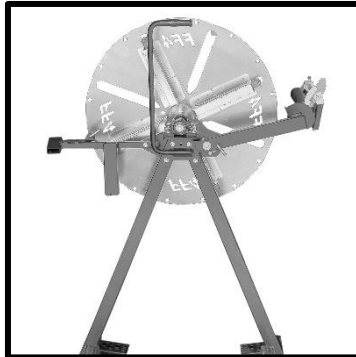
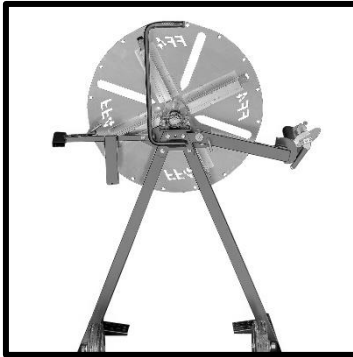
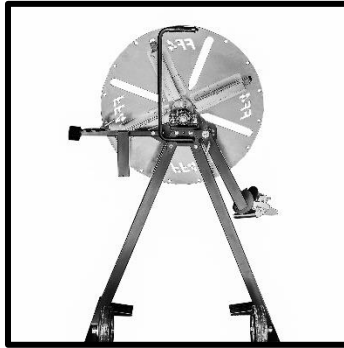
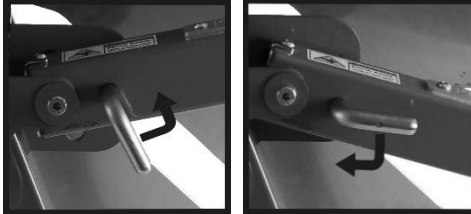


Use the ratchet action & thumbscrews to adjust the position of the guide rollers. Ratchet the horizontal rollers down to tighten. The vertical rollers should be at a 90 degree angle to the hose, rope or cord being wound and make sure it remains in the middle of the Fair Lead when winding. If the hose, cord or rope slips out of the Fair Lead stop turning the crank handle to prevent kinks and reset the material properly through the guide rollers.



Operating

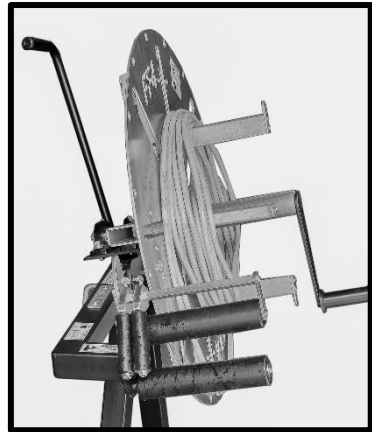
The Guide Arm can swing completely down and out of the way for manual guiding of the hose by the operator. Turn the guide arm lock clockwise or counter clockwise to loosen or tighten the arm. Position the arm to the desired spot and then tighten the lock to secure it in place.



With the crank handle firmly in place in the reel plate stem, place one hand on the plastic palm grip on the crank handle and turn the crank handle clockwise to wind the hose, cable or rope. The operator should turn the wheel at a comfortable speed keeping it under control at all times. Slow down the turn speed when nearing the end of the hose, cord or rope being wound.



Remove wound end from the Fair Lead and tie off the wound hose, cable or rope with twine or tie straps. The wheel has four open tie slots cut into the face of the wheel to conveniently access the wound up hose from two sides when tying it down.



Disengage one or more of the detent arms to slacken the wound hose enough to pull it off the wheel. Your wound hose, cable or cord is now ready for stacking or storage.

Assembly

## 4. Assembly

### 4.1 Assembly – Fast Freddy 4 & 6

Please follow the assembly instructions provided.

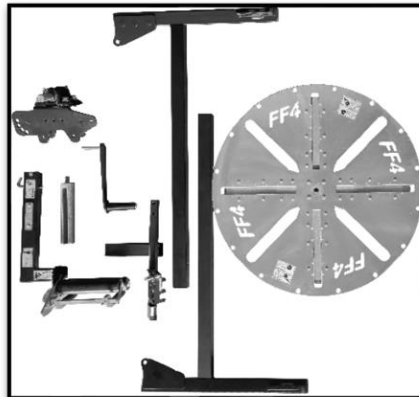
Tools required for assembly include:

- 9/16" Wrench
- 9/16" Ratchet / Socket
- 3/16" Allen Key
- 1/2" Wrench
- Large Flat Bar or Wrench (Any Size).

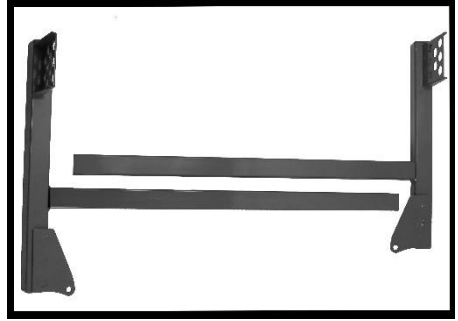
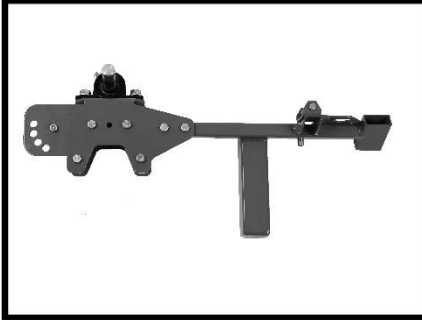


Your Fast Freddy Winder is shipped in a box.

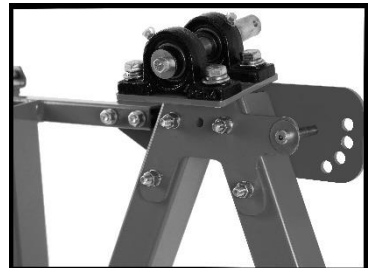
All of the components required to assemble your Fast Freddy will be packed inside as shown by the illustration. (Packaging may differ slightly with wall or hitch mount models.)



1. Find the Main Bearing Mount. Note: the 4 bolts, (3 bolts for Wall and Hitch Mount Models) are assembled in the bearing mount before shipping. Remove these bolts for the next step.

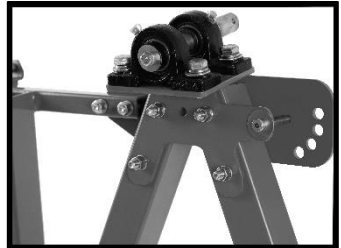
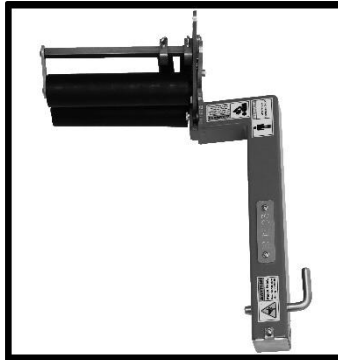


2. Assemble the 2 legs to the Bearing Mount. Reinsert the 4 bolts back into the Bearing Mount and tighten. Note: The nuts must be placed on the back of the Bearing Mount. There are 4 bolts for leg mount, and 3 bolts for Wall and Hitch mount. (Note: the Wall and Hitch mounts have different bolt patterns.)

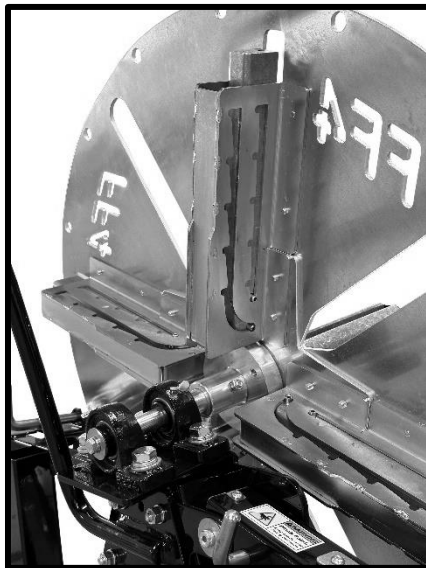


Assembly

3. Find the Guide Arm, and remove the hinge bolt and retract the lock pin. Assemble the Guide Arm to the Bearing Mount and insert the hinge pin. (Do not tighten bolt. Bolt must only be snug). Then, add the nut to the bolt and lock the bolt. This keeps it from loosening while not over tightening the Guide Arm.

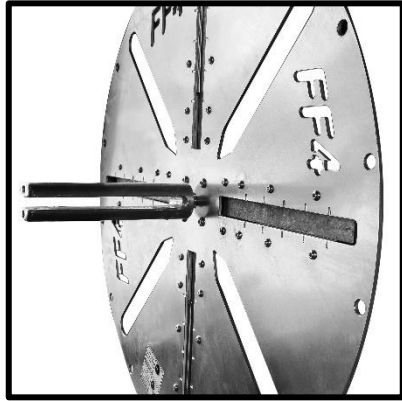
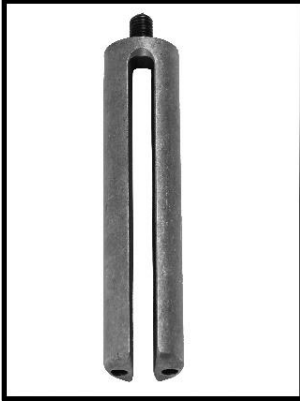


4. Find the Aluminum Reel Plate Assembly and slide the aluminum hub over the bearing shaft. The holes must be aligned between the aluminum bracket and main bearing shaft. Insert the bolt into the hole. (This fastens the Reel Plate to the Leg/Bearing Assembly.)

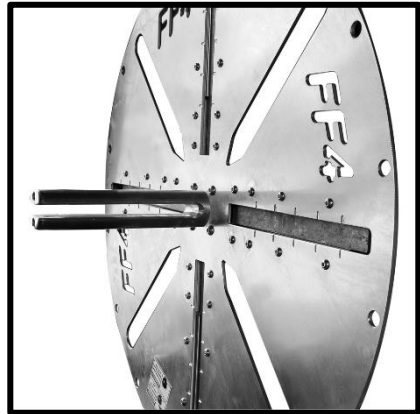
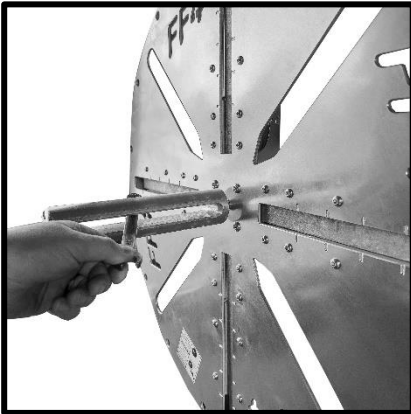


Assembly

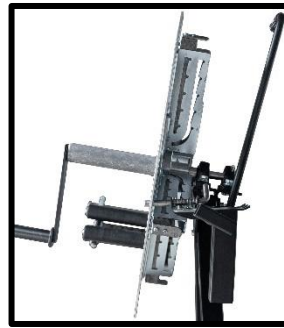
5. Insert the Reel Plate Stem into the threaded hole on the Reel Plate face. (Note: This thread is aluminum and must be coated with anti-seize to prevent seizing.) Screw the Reel Plate Stem into the Reel Plate fully by hand. (DO NOT Force pin into thread!)



6. Use a large wrench or flat bar to tighten Main Reel Stem. Lock the Reel Plate with the lock arm, and slide the wrench or flat bar into the slot and tighten with 50 – 60 Lbs of force.



7. Insert the crank handle into the holder next to the tool organizer when not in use. Check to make sure the 2 hand crank pins fit securely into the Reel Plate Stem.



After assembled read and understand the operation instructions contained in the manual before using your Fast Freddy winder

If you have any questions concerning assembly, missing parts or hardware, please contact Split-Fire Sales Inc.



Storage

## 5. Storage

### 5.1 Storage Warnings

**Important!** When storing your Fast Freddy winder special attention should be drawn to the areas listed below.

After each use, make sure that the crank handle is firmly placed in the crank handle holder and that the wheel is locked.

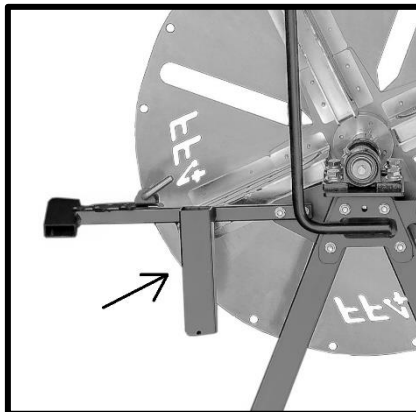
The left Guide Arm can swing down towards the frame to save space.

Wash down the machine if covered in dust or mud paying particular attention to the Fair Lead. Make sure that dirt, saw dust, clay or mud is washed off the Guide Rollers as this may dry and harden leaving a layer of abrasive material on the rollers.

Do not store near corrosive materials. Do not use corrosive materials to clean machine.

### 5.2 Storage Accessories

Your Fast Freddy Winder comes with a convenient organizer for holding small snipping tools and miscellaneous cutters. A tie strap holder on the back is convenient for holding bundled plastic tie straps or roll of twine.





## 6. Warranty

Split-Fire Sales Inc. guarantees the original purchaser of any new Split-Fire product, that the same is free of defects in workmanship or materials that may cause performance failure, subject to the conditions hereafter.

***Split-Fire must be contacted before the problem on the machine has been fixed.***

Split-Fire will diagnose the problem and authorize any warranty work that will be allowed.

If Split-Fire does not authorize or parts are not sent from Split-Fire, Warranty will not be applicable.

This guarantee is limited to a period of one year from the date of purchase. Replacement of any defective part is free of charge FOB Split-Fire sales Inc.

If Split-Fire requires the parts to be returned to Split-Fire, Split-Fire will pay for that shipping.

This guarantee does not apply to other parts that are manufactured and guaranteed by the manufacture thereof, nor does this apply with respect to any part or product that:

1. has original parts removed, adjusted or altered without specific authorization beforehand from Split-Fire Sales Inc.
2. has had placed upon or attached to it any part or product not sold or approved by Split-Fire Sales Inc.
3. has been damaged or is not used in conformity with the applicable instruction for the machine.
4. has not been properly adjusted, or maintained by the owner.
5. Has been adjusted or altered to increase the performance of the machine.

Warranty

This guarantee is in lieu of, and excludes all other guarantees and conditions of merchantability and fitness for a purpose. Acceptance of a Split-Fire Sales product constitutes an agreement that Split-Fire Sales shall have no liability for any special or consequential damage.

I have read and fully understand all of the above.

Customer/Operator Signature: \_\_\_\_\_

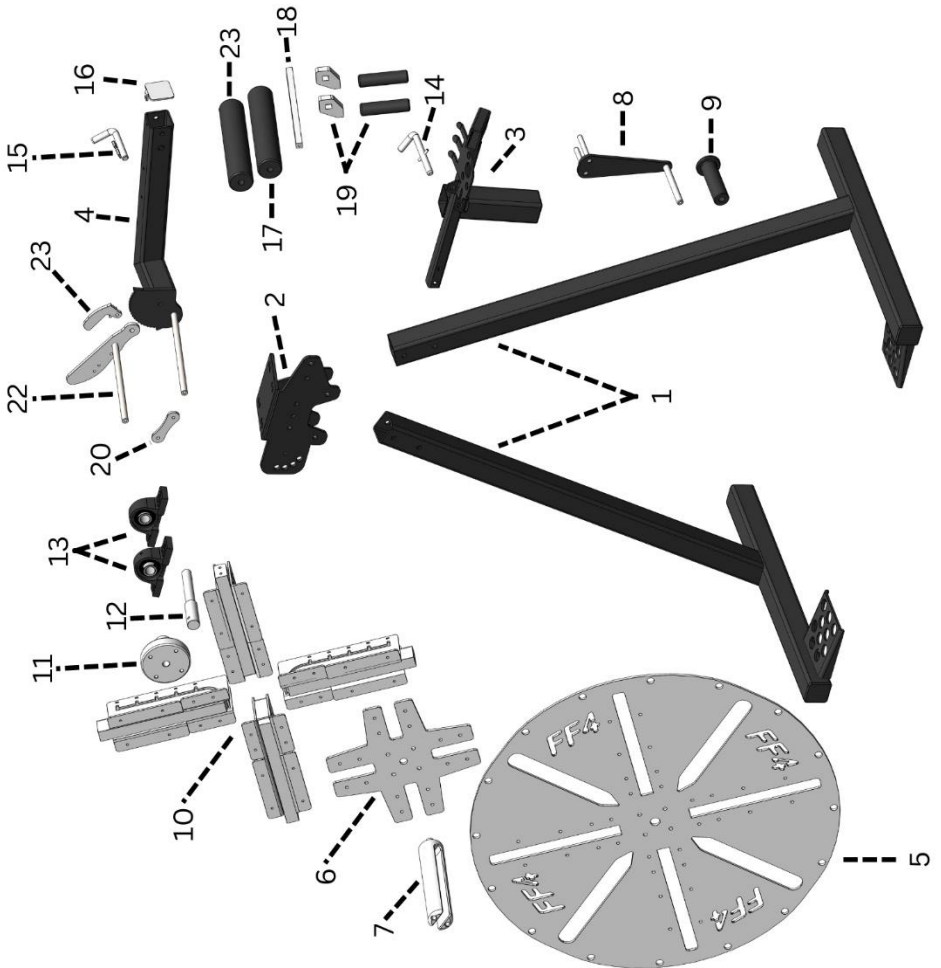
Date: \_\_\_\_\_



## Parts Breakdown

## 7. Parts Breakdowns

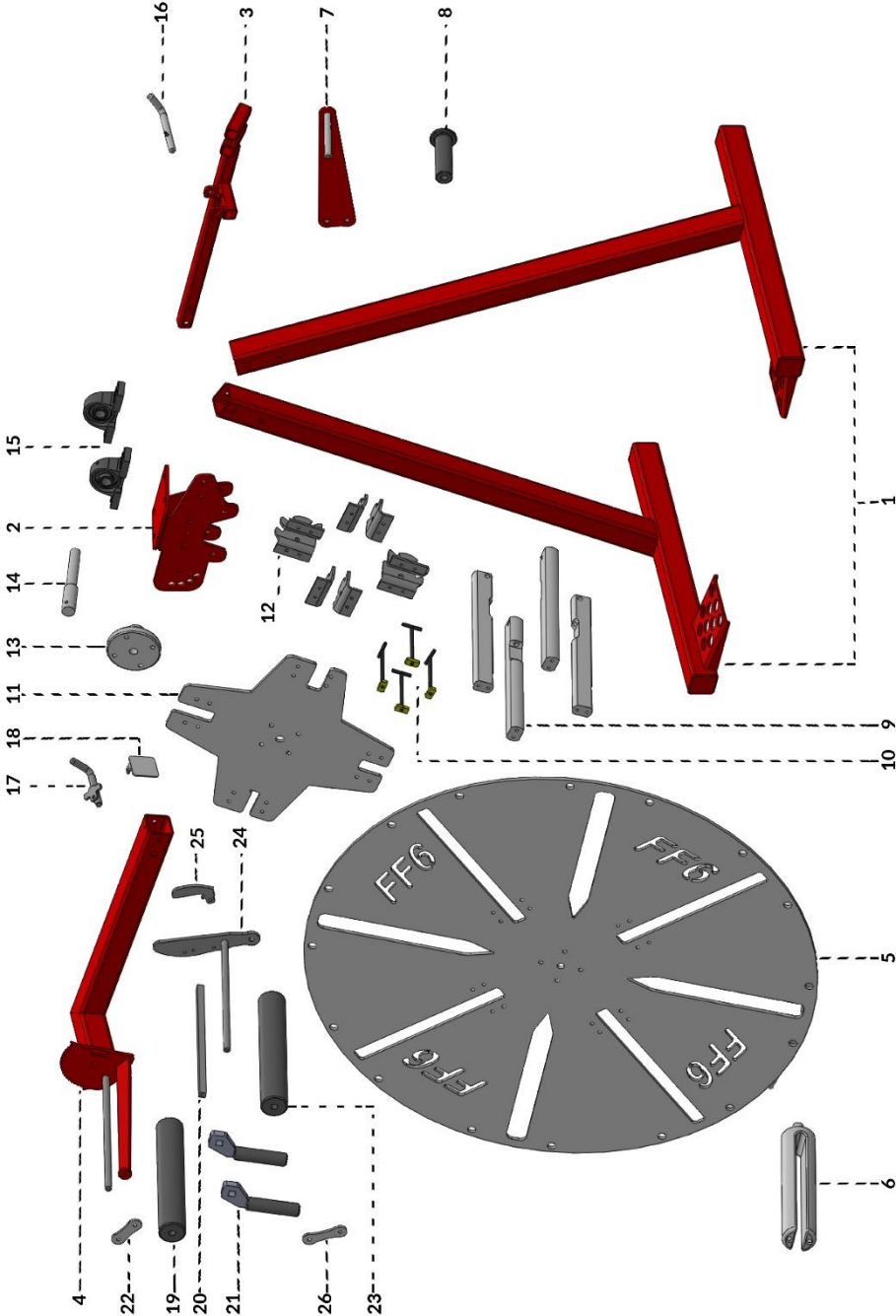
## 7.1 Fast Freddy 4 Parts Breakdown



Item	Part Number	Description
1	FF46-LS2	Legs (Set of 2)
2	FF46.1-BMA	Bearing Mount
3	FF4-LAA	Lock Arm
4	FF4.1-GAA	Guide Arm
5	FF4.1-RPA	Reel Plate
6	FF4.1-RPB	Reel Plate Backer
7	FF4-RPSA	Reel Plate Stem
8	FF4-CHA	Crank Handle
9	FF246-CHUH	Crank Handle - UHMW Grip
10	FF4.1-DBA	Detent Bracket Assembly (Each)
11	FF46-BSH	Bearing Shaft - Hub
12	FF46-BSAS	Bearing Shaft
13	FF46-B34S2	Bearings 3/4" (Set of 2)
14	FF4.1-RPLP	Reel Plate - Locking Pin
15	FF46-GALP	Guide Arm - Locking Pin
16	FF46-GASSEC	Guide Arm - Zinc Plated End Cap
17	FF4-LGRU	Lower Guide Roller - UHMW
18	FF4-VGRSP	Vertical Guide Roller - Slide Pin
19	FF46-VGRAS2	Vertical Guide Roller Assembly (Set of 2)
20	FF46-URVRL	Upper Roller to Vertical Roller - Link
21	FF4-UGRU	Upper Guide Roller - UHMW
22	FF4-GATRA	Guide Arm Top Roller - Arm
23	FF46-GAR	Guide Arm - Ratchet

Parts Breakdown

### 7.2 Fast Freddy 6 Parts Breakdown



Fast Freddy 6 Part List

Item	Part Number	Description
1	FF46-LS2	Legs (set of 2)
2	FF46-BMA	Bearing Mount
3	FF6-LAA	Lock Arm
4	FF6-GAA	Guide Arm
5	FF6-RPA	Reel Plate
6	FF6-RPSA	Reel Plate Stem
7	FF6-CHA	Crank Handle
8	FF246-CHUH	Crank Handle - UHMW Handle
9	FF6-DA2S4	Detent Arms (set of 4)
10	FF46-DATS4	Detent Arm - T-Pins (set of 4)
11	FF6-RPBA	Reel Plate - Backer
12	FF46-DABSS4P	Detent Arm - Brackets (set of 4 pairs)
13	FF46-BSH	Bearing Shaft - Hub
14	FF46-BSAS	Bearing Shaft
15	FF46-B34S2	Bearings 3/4" (set of 2)
16	FF46-RPLP	Reel Plate - Locking Pin
17	FF46-GALP	Guide Arm - Locking Pin
18	FF46-GASSECC	Guide Arm - Stainless Steel End Cap
19	FF6-LGRU	Lower Guide Roller - UHMW
20	FF6-VGRSP	Vertical Guide Roller - Slide Pin
21	FF46-VGRAS2	Vertical Guide Roller Assembly (set of 2)
22	FF46-URVRL	Upper Roller to Vertical Roller - Link
23	FF6-UGRU	Upper Guide Roller - UHMW
24	FF6-GATRA	Guide Arm Top Roller - Arm
25	FF46-GAR	Guide Arm Ratchet
26	FF6-LRSL	Lower Guide Roller Stabilizer - Link

